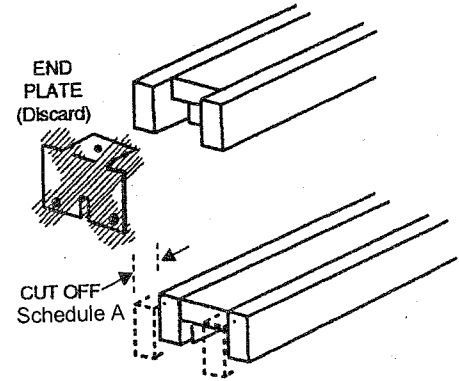
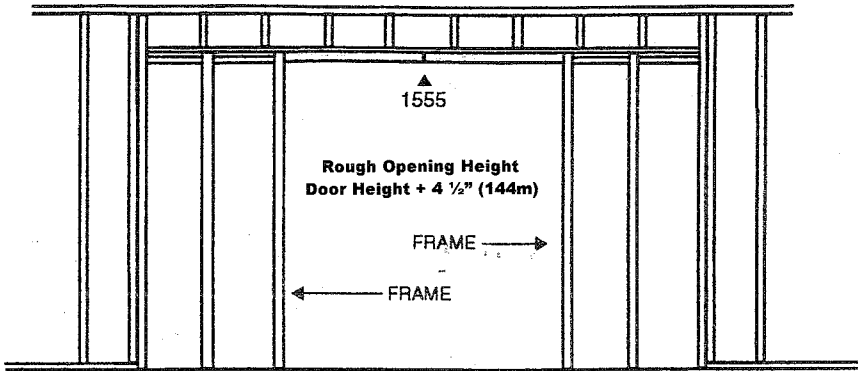


www.afwood.com

# INSTRUCTIONS

## 1555 CONVERGING DOOR KIT



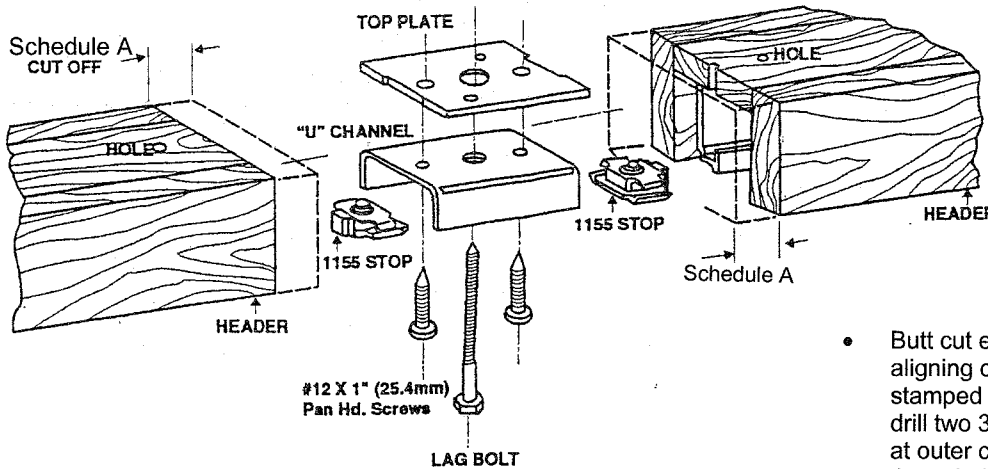
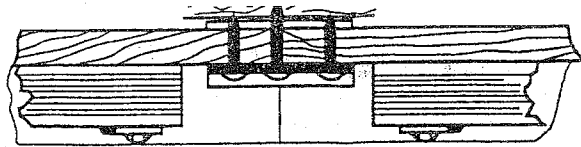
### ROUGH OPENINGS

Manufacture	Series	Rough Openings
A & F Wood	3617, 3618, 3619, 2000	4 x Door Width + 1/4"
A & F Wood	1750	4 x Door Width + 2"
Johnson	1500, 1560, 2511	4 x Door Width
Johnson	2710, 2711	4 x Door Width + 1 1/2"

- Remove and discard end plates from "door opening" end of each header.
- Cut (**see Schedule A**) from length of each header (wood part only) where discarded end plates had been located. Cut ends square to keep header straight when jointed.

### SCHEDULE A CUT

Manufacture	Series	Cut
A & F Wood	3617,3618,3619,2000	1"
A & F Wood	1750	3/4"
Johnson	1500,1560,2511	7/8"
Johnson	2710, 2711	7/8"



- Butt cut ends together and insert "U" channel, aligning cut ends of header with center mark stamped in channel. Using channel as guide, drill two 3/16" (4.7mm) holes through header at outer channel holes. Insert screw through these holes and into top plate of top of header. Tighten, forming a one-piece header.
- Drill a 1/4" (6.3mm) hole at channel center where header ends meet to enable the lag screw to be fastened into rough header for increased center support.
- Insert stops into track and leave loose until doors are hung, then tighten. Proceed with regular frame assembly instruction.

### 1555 CONVERGING DOOR KIT

- Remove and discard end plates from "door opening" end of each header.
- Cut (**see Schedule A**) from length of each header (wood part only) where discarded end plates had been located. Cut ends square to keep header straight when jointed.

