



A & F WOOD PRODUCTS, INC.

5665 Sterling Drive Howell, MI 48843

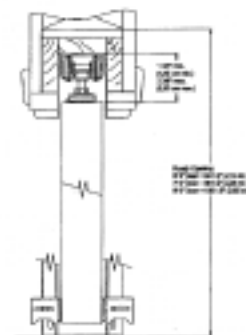
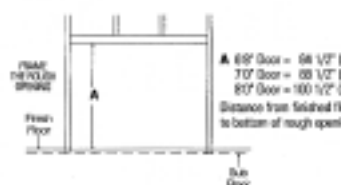
Phone: 517.545.5811 Fax: 517.545.5633 Toll Free: 800.367.3293

www.afwood.com

K.D. Pockets

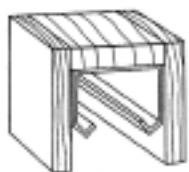
150 lb. & 250 lb. K.D. Pocket Door Specifications

- For installation of pocket or bi-parting doors up to 3" width, weighing up to 150 lbs. each and up to 8' high
- Heavy gauge, wrap around steel stiffener reinforces split jambs
- Four large 1" wheels for easy rolling action
- Easy-to-install feature makes installation a "snap"
- Supports panels weighing up to 150 lbs.
- Cut marks on header make for easy sizing
- Easy adjustment after installation
- Cut marks on header make for easy sizing
- Non-handed steel header brackets for easy leveling of header assembly
- V-Groove jump proof aluminum track
- Opening width equals door width multiplied by 2, add 1 1/4"
- For Bi Part: Sum of 2 doors multiplied by 2, add 1/4"
- Kits are sized for 3'0" door width and can be cut shorter at installation
- For 6'8" Door: Height equals 84 1/2" from finished floor
- For 7'0" Door: Height equals 88 1/2" from finished floor
- For 8'0" Door: Height equals 100 1/2" from finished floor
- Kits are sized for 6'8", 7'0", or 8'0" door height and can be cut shorter at installation
- PDFC150N conforms to ANSI A156.14 type D8671 Cross Reference: Stanley 735/40-3925R/40-3940, Crowder Crowderframe, Hager 9630/9631, Johnson 1500, Sterling 1630
- 250 lb. heavy duty hardware has four large 1" ball bearing wheels for easy rolling action.
- Supports panels weighing up to 250 lbs.



Complete Set:

One set consists of: 1 Header Track, 2 Floor Plates, 1 Wrench, 2 Guides, 1 End Bracket, 1 Bumper, 1 Hanger, 2 Jamb Studs



HEADER TRACK
1 - Header



FLOOR PLATE
2 - Floorplate

WRENCH
1 - 1750Wrench



SPLIT FLOOR GUIDE
1 - Splitfloorguide



END BRACKET
2 - Bracket

BUMPER
1 - 1750Bumper



HANGER
2 - 1750HDW



JAMB STUDS
1 - Jamb