



A & F WOOD PRODUCTS, INC.

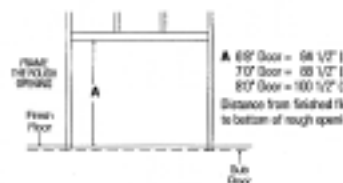
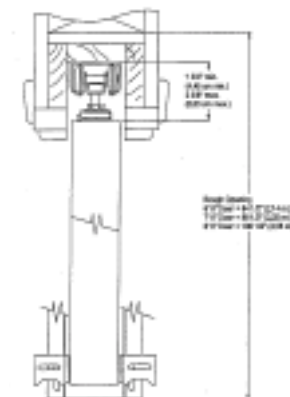
5665 Sterling Drive Howell, MI 48843

Phone: 517.545.5811 Fax: 517.545.5633 Toll Free: 800.367.3293

www.afwood.com

Built-Up Pockets 150 lb. & 250 lb. Pocket Door Hardware Specifications

- For installation of pocket or bi-parting doors up to 4' wide, 1" to 1-3/8" thick panels weighing up to 150 lbs. each and up to 8' high.
- Heavy gauge, steel stiffener reinforces split jambs.
- Four large 1" wheels for easy rolling action.
- Easy to install feature makes installation a "snap".
- Supports panels weighing up to 150 lbs.
- Easy adjustment after installation.
- V-groove jump proof aluminum track.
- Opening width equals door width multiplied by 2, add 2".
- For Bi Part: Sum of 2 doors multiplied by 2, add 2".
- For 6'8" Door: Height equals 84" from finished floor.
- For 7'0" Door: Height equals 88" from finished floor.
- For 8'0" Door: Height equals 100" from finished floor.
- Built-Ups can be ordered in 6'8", 7'8", or 8'0" door height.
- PDFC150N conforms to ANSI A156.14 type D8681
- Cross Reference: Stanley 1750, Cox 15-200, Grant 7000 Series, Hager 9601/9701, Johnson 100, Lawrence 506/580 Track, Sterling 1601 Series.
- 250 lb. heavy duty hardware has four large 1" ball bearing wheels for easy rolling action.
- Support panels weighing up to 250 lbs.



Complete Set:

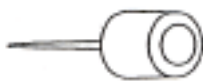
One set consists of: 1 Track, 1 pair of Hangers, 2 Guides, 1 Bumper and 1 Wrench.



WRENCH
1 - 1750Wrench



SPLIT FLOOR GUIDE
1 - Splitfloorguide



BUMPER
1 - 1750Bumper
(already attached
on Built-Up)



HANGER
2 - 1750HDW



TRACK
1 - 1750Track